

235-Article_Text-553-1-10- 20210224.pdf

by

Submission date: 09-May-2021 06:25PM (UTC+0700)

Submission ID: 1581757941

File name: 235-Article_Text-553-1-10-20210224.pdf (856.12K)

Word count: 1972

Character count: 10424



ANALYSIS OF CHANGES IN URBAN HEAT ISLANDS IN GORONTALO CITY USING THE LANDSAT TM8 IMAGERY

Sri Sutarni Arifin^{1,2}, Baharuddin¹, Rosady Mulyadi¹, Abdul Rachman Rasyid¹

¹Hasanuddin University

²Universitas Negeri Gorontalo

srisutarni@ung.ac.id



Abstract

An urban heat island is a condition where an area has a warmer temperature than the surrounding area in an urban area. Several articles indicate that the occurrence of urban heat islands is due to a decrease in the amount of vegetation and an increase in the number of built-up areas. This study aims to analyze changes in urban heat islands in Gorontalo City for five years based on urban spatial patterns. The research was conducted in the city of Gorontalo using Landsat TM8 imagery to measure the surface temperature at the study location. The method used is spatial analysis through Geographical Information Systems. The results showed that the highest surface temperature was in residential areas and the lowest was in the Green Open Space area.

Keywords

Urban; temperature; Landsat imagery

I. INTRODUCTION

Changes in urban heat islands will have an impact on climate change that will trigger disasters and urban problems, including floods, drought, increased temperatures, and even causes various diseases. Increasing temperature in urban areas causes problems, including reducing the comfort of city residents, causing health problems, increasing energy consumption such as the use of air conditioning, and disturbing the balance of the ecosystem.

An urban heat island is a condition where an area has a warmer temperature than the surrounding area in an urban area. Several studies on urban heat islands show that there is a change in Land Surface Temperature (LST) over a while. The results of research [1] showed that there was an increase in temperature in the area of Nanchang City, China by 1.6 °C between 2000 and 2013. Meanwhile, [2] found that the surface air temperature in Sofia City was 1.6 - 2.4°C higher than in the suburbs in the morning, the temperature difference decreased to 0.5°C in the afternoon.

One of the causes of heat islands in cities is the number of buildings, dense urban structures, and a lack of vegetation [3]. Besides, according to [4]) the factors causing urban heat islands are different in each layer, namely in the ground (below the surface); surface (measured using remote sensing); in air volume between buildings (urban canopy layer); and on top of buildings (within the urban boundary layer).

The area of urban heat islands (UHI) varies greatly depending on the physical, geographic, and climatological characteristics of a city (Anderson et al., 2018). Meanwhile, soil surface temperature is strongly influenced by socio-ecological variables such as vegetation index, built-up area index, water index, population density, and fossil fuel CO₂ emissions [1].

According to BMKG data (2020), daily temperatures in the Gorontalo and surrounding areas range between 24°C at night and 31° - 33°C during the day. Furthermore, the results of the study show that the highest surface temperature of Gorontalo City is in the downtown area which ranges from 31-32°C, and the temperature in the Pulubala residential area, Kota Tengah District is between 31-33°C [5].

Research on urban heat islands that has been carried out previously carried out an analysis of temperature changes shown in the form of degrees of temperature differences. This research is designed to see the changes in the distribution of the urban heat island area in Gorontalo City in a period of 5 years.

II. METHODS

19

A. Study Area

The research was conducted in the city of Gorontalo, which is the capital of Gorontalo Province (Figure 1). The reason for choosing the location was because this area was the region with the fastest development growth in Gorontalo Province. This region has an archipelago tropical climate with a fairly high surface temperature.

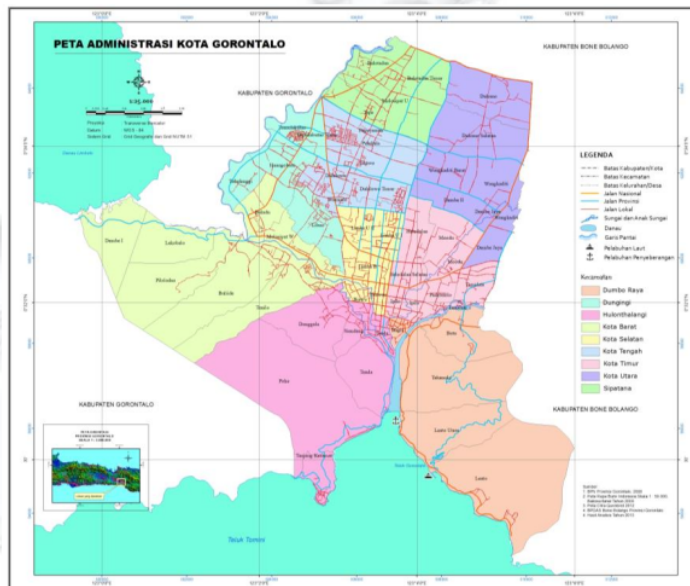


Fig. 1. Gorontalo City area (Study Area)

2

B. Data Descriptions and Pre-Processing

In this study, we used Landsat images acquired on 29 August 2020 (Landsat 8 OLI/TIRS). For the Landsat-8 OLI/TIRS data, the multispectral bands (bands 1-7 and 9) also have a 30 m spatial resolution. Its panchromatic band (band 8) has a 15 m spatial resolution while its thermal bands (band 10 and 11) have 100 m spatial resolution, which has also been resampled to 30 m by the USGS (<https://landsat.usgs.gov>). During the selection of image data, cloud-free images (<10%) were considered.

In this study, we used preprocessed datasets downloaded from <http://earthexplorer.usgs.gov>. All the images used had undergone standard terrain and atmospheric correction (Level 1T) processing (<https://landsat.usgs.gov>). They have been geo-referenced to the WGS84/UTM 51 N projection system. The digital number (DN) values of the multispectral bands have been converted into surface reflectance values, while those of the thermal bands have been converted into at-satellite brightness temperature expressed in degrees Kelvin and further converted to degrees Celsius.

C. Land Surface Temperatur (LST) Analysis

Land Surface Temperature Measurement is carried out through interpretation of Landsat TM8 images. Radiometric correction on Bands 10 and 11 Landsat 8 TM OLI / TIRS is carried out by changing the DN value to radiance by looking at information on the date, month, year of image recording, and sun elevation. After that, the spectral radiance to surface temperature (°K) calibration process was carried out using equation (1) to obtain the Kelvin temperature degree value (Landsat 8 Handbook).

$$T = K2 / (\ln(K1/L\lambda + 1)) \dots\dots\dots (1)$$

Where :

T = Kelvin Temperature (°K)

K2 = calibration constant 2

K1 = calibration constant 1

Lλ = spektral radiance in watts/(meter squared * ster * μm)

Based on the method used by [5], the preprocessed thermal bands according to containing at-satellite brightness temperatures expressed in degrees Kelvin. To retrieve the LST values, we first derived the land surface emissivity (ε) values Equation (2)

$$\epsilon = m PV + n \dots\dots\dots (2)$$

where $m = (\epsilon_s - \epsilon_v) - (1 - \epsilon_s) F_{ev}$ and $n = \epsilon_s + (1 - \epsilon_s) F_{ev}$, where ϵ_s and ϵ_v are the soil emissivity and

vegetation emissivity, respectively. In this study, we used the result of ε for $m = 0.004$ and $n = 0.986$.

PV is the proportion of vegetation extracted from the NDVI Equation (3).

$$PV = ((NDVI - NDVI_{min}) / (NDVI_{max} - NDVI_{min}))^2 \dots\dots\dots (3)$$

where NDVI is the normalized difference vegetation index derived in Equation (5) (see Section 2.4).

The NDVI_{min} and NDVI_{max} are the minimum and maximum values of the NDVI, respectively. The emissivity-corrected LST values were then retrieved using Equation (4).

$$LST (°C) = TB/1 + (\lambda TB/\rho) \ln \epsilon \dots\dots\dots (4)$$

where TB = Landsat TM Band 6 at-satellite brightness temperature; λ = wavelength of emitted radiance (λ = 11.5 μm for Landsat TM Band 6, λ = 10.8 μm for Landsat TIRS Band 10) [3]; $\rho = h \times c / \sigma$ (1.438×10^{-2} mK), σ = Boltzmann constant (1.38×10^{-23} J/K), h = Planck's constant (6.626×10^{-34} Js),

c = velocity of light (2.998×10^8 m/s), ε is the land surface emissivity. We later converted the retrieved

LST values from degrees Kelvin to degrees Celsius (°C).

The NDVI values range from -1 to 1, with positive values representing vegetated areas and negative values representing non-vegetated areas.

$$NDVI = (NIR - RED) / (NIR + RED) \dots\dots\dots (4)$$

where NIR = band 4 (for Landsat TM—wavelength 0.76–0.90 μm); band 5 (for Landsat OLI—wavelength 0.85–0.88 μm); RED = band 3 (for Landsat TM—wavelength 0.63–0.69 μm); and band 4 (for Landsat OLI—wavelength 0.64–0.67 μm).

Result And Discussion

The results of research through an interpretation of Landsat TM 8 images to measure the distribution of surface temperature are grouped into 5 classes, including very low (less than 23°C); low (23-25°C); Medium (25 - 27°C); High (27 - 29°C) and Very High (> 30°C) (Figure 2). Measurement of the surface temperature using 2 images with different recording times, namely September 2015 and September 2020.

The results of the analysis show that in 2020 the areas with the highest land surface temperature (LST) are in the Kota Selatan district, Kota Tengah, Kota Timur, Dungingi, and parts of Sipatana and Hulonthalangi areas. Meanwhile, temperature drops occurred in Kota Barat Districts. In contrast to 2015, the highest surface temperature was found only in Dungingi and parts of Sipatana, while Kota Tengah, Kota Utara, Kota Barat, Hulonthalangi, and Dumbo Raya were dominated by low to very low-temperature classes.

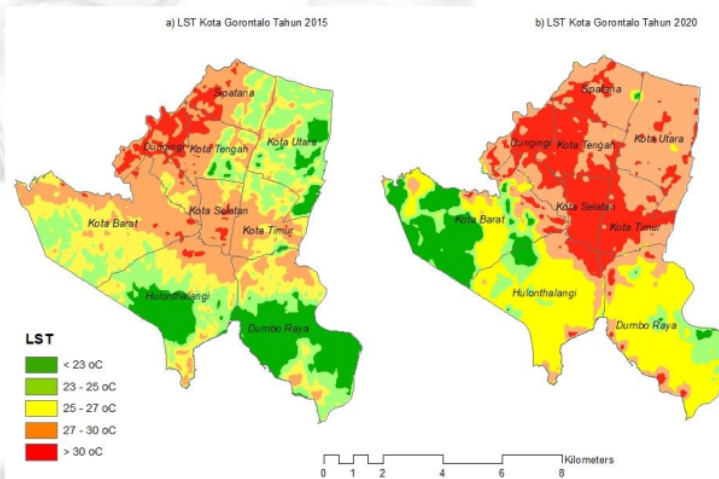


Fig.2. Land Surface Temperature (LST) maps of Gorontalo City area in (a) 2015 and (b) 2020

The distribution of surface temperatures over the 5 years from 2015 to 2020 shows an increase in areas with a very high-temperature class of 16.37 percent and a high-temperature class of 2.49 percent. Meanwhile, the decrease in areas with the low-temperature class was 14.77 percent and the very low-temperature class was 6.79 percent.

Based on the results of this analysis, it can be seen that there has been an increase in surface temperature in the City of Gorontalo within 5 years, especially in the sub-districts located in the city center. This has led to the increasing of the urban hot island area in Gorontalo City.

TABLE I. AREA-BASED ON SURFACE TEMPERATURE CLASSIFICATION IN GORONTALO CITY

LST Class	The 2015 Year		The 2020 Year	
	Area (hectare)	Percentage	Area (hectare)	Percentage
Less 23° (very low)	1.115,64	15,79	635,85	9,00
23° - 25° (low)	1.610,55	22,79	566,55	8,02
25° - 27° (medium)	1.864,53	26,39	2.055,60	29,09

27° - 30° (high)	2.109,33	29,85	2.285,46	32,34
More 30° (very high)	365,94	5,18	1.522,53	21,55
	7.065,99	100,00	7.065,99	100,00

III. CONCLUSION

Changes in urban heat islands in Gorontalo City have increased in a period of 5 years from 2015 to 2022 through measurements using Landsat TM8 radiometric thermal band correction images. The urban heat island is located in a sub-district that is in the city center, while the area with a low surface temperature is in a hilly area where land use is dominated by trees and shrubs which are water catchment areas

Acknowledgment (HEADING 5)

This article is part of the research for a doctoral dissertation at the Hasanuddin University Architecture Study Program.

References

1. X. Zhang, R. C. Estoque, and Y. Murayama, "An urban heat island study in Nanchang City, China based on land surface temperature and social-ecological variables," *Sustain. Cities Soc.*, 2017, doi: 10.1016/j.scs.2017.05.005.
2. L. L. Vitanova and H. Kusaka, "Study on the Urban Heat Island in Sofia City: Numerical Simulations with Potential Natural Vegetation and Present Land Use Data," 2018.
3. N. Aghamohammadi, C. S. Fong, A. Ghaffarianhoseini, L. P. Wong, N. Hassan, and M. Sulaiman, "A critical review of urban heat island phenomenon in the context of greater Kuala Lumpur, Malaysia," *Sustain. Cities Soc.*, 2018.
4. M. Roth and W. T. L. Chow, "A historical review and assessment of urban heat island research in Singapore," *Singap. J. Trop. Geogr.*, vol. 33, pp. 381-397, 2012, doi: 10.1111/sjtg.12003.
5. A. G. Koto, "Analisis Suhu Permukaan Kota Gorontalo dan Sekitarnya Menggunakan Saluran Thermal Citra Landsat 7 ETM +," *Pros. Semin. Nas. Penginderaan Jauh*, pp. 336-343, 2015.

ORIGINALITY REPORT

21 %
SIMILARITY INDEX

%
INTERNET SOURCES

21 %
PUBLICATIONS

%
STUDENT PAPERS

PRIMARY SOURCES

1 A Aris, H Syaf, D N Yusuf, Nurgiantoro. **3%**
"Analysis of urban heat island intensity using multi temporal landsat data; case study of Kendari City, Indonesia", IOP Conference Series: Earth and Environmental Science, 2019
Publication

2 Ronald C. Estoque, Yuji Murayama, Soe W. Myint. **3%**
"Effects of landscape composition and pattern on land surface temperature: An urban heat island study in the megacities of Southeast Asia", Science of The Total Environment, 2017
Publication

3 Ranagalage, Murayama, Dissanayake, Simwanda. **2%**
"The Impacts of Landscape Changes on Annual Mean Land Surface Temperature in the Tropical Mountain City of Sri Lanka: A Case Study of Nuwara Eliya (1996–2017)", Sustainability, 2019
Publication

4

Elhadi K. Mustafa, Yungang Co, Guoxiang Liu, Mosbeh R. Kaloop, Ashraf A. Beshr, Fawzi Zarzoura, Mohammed Sadek. "Study for Predicting Land Surface Temperature (LST) Using Landsat Data: A Comparison of Four Algorithms", Advances in Civil Engineering, 2020

Publication

2%

5

Salahuddin M. Jaber. "Landsat-based vegetation abundance and surface temperature for surface urban heat island studies: the tale of Greater Amman Municipality", Annals of GIS, 2018

Publication

2%

6

S. Ahmed. "Assessment of urban heat islands and impact of climate change on socioeconomic over Suez Governorate using remote sensing and GIS techniques", The Egyptian Journal of Remote Sensing and Space Science, 2018

Publication

1%

7

Patricia Wanjiku Mwangi, Faith Njoki Karanja, Peter Kariuki Kamau. "Analysis of the Relationship between Land Surface Temperature and Vegetation and Built-Up Indices in Upper-Hill, Nairobi", Journal of Geoscience and Environment Protection, 2018

Publication

1%

8

Roth, Matthias, and Winston T.L. Chow. "A historical review and assessment of urban heat island research in Singapore : Urban heat island research in Singapore", Singapore Journal of Tropical Geography, 2012.

Publication

1 %

9

Na, Sang-il, Jin-ki Park, Shin-chul Baek, Si-young Oh, and Jong-hwa Park. "Landsat imagery-based water turbidity monitoring in Lake Paldang, Korea", Land Surface Remote Sensing, 2012.

Publication

1 %

10

Atik Nurwanda, Tsuyoshi Honjo. "Analysis of Land Use Change and Expansion of Surface Urban Heat Island in Bogor City by Remote Sensing", ISPRS International Journal of Geo-Information, 2018

Publication

1 %

11

Lidia Lazarova Vitanova, Hiroyuki Kusaka. "Study on the urban heat island in Sofia City: Numerical simulations with potential natural vegetation and present land use data", Sustainable Cities and Society, 2018

Publication

1 %

12

W. Yue. "The relationship between land surface temperature and NDVI with remote sensing: application to Shanghai Landsat 7

1 %

ETM+ data", International Journal of Remote Sensing, 1/2007

Publication

13

Ehsan Kamali Maskooni, Hossein Hashemi, Ronny Berndtsson, Peyman Daneshkar Arasteh, Mohammad Kazemi. "Impact of spatiotemporal land-use and land-cover changes on surface urban heat islands in a semiarid region using Landsat data", International Journal of Digital Earth, 2020

Publication

<1 %

14

Hao Hou, Ronald C Estoque. "Detecting Cooling Effect of Landscape from Composition and Configuration: An Urban Heat Island Study on Hangzhou", Urban Forestry & Urban Greening, 2020

Publication

<1 %

15

Khalid A. Almalki, Ali A. Al-Namazi. "Impact of the industrial sector on surface temperatures in Jubail City, Saudi Arabia using remote sensing techniques", Spatial Information Research, 2019

Publication

<1 %

16

Min Min, Hongbo Zhao, Changhong Miao. "Spatio-Temporal Evolution Analysis of the Urban Heat Island: A Case Study of Zhengzhou City, China", Sustainability, 2018

Publication

<1 %

17

"Handbook of Climate Change Mitigation and Adaptation", Springer Nature, 2017

Publication

<1 %

18

Dissanayake, Morimoto, Ranagalage, Murayama. "Land-Use/Land-Cover Changes and Their Impact on Surface Urban Heat Islands: Case Study of Kandy City, Sri Lanka", Climate, 2019

Publication

<1 %

19

Hitendra Padalia, Aimon Bushra, Gajendra Singh, Subrata Nandy, Ishwari Datt Rai, Gopal S. Rawat. "Spatial patterns of plant functional types and environmental proxies of plant richness in alpine region of Western Himalaya, India", Biodiversity and Conservation, 2018

Publication

<1 %

20

Iman Rousta, Md Sarif, Rajan Gupta, Haraldur Olafsson, Manjula Ranagalage, Yuji Murayama, Hao Zhang, Terence Mushore. "Spatiotemporal Analysis of Land Use/Land Cover and Its Effects on Surface Urban Heat Island Using Landsat Data: A Case Study of Metropolitan City Tehran (1988–2018)", Sustainability, 2018

Publication

<1 %

21

Madson Tavares Silva, Eduardo da Silva Margalho, Edivaldo Afonso de Oliveira Serrão, Amanda Cartaxo de Souza et al. "Application

<1 %

of Spatial Modeling of Biophysical Variables in an Urbanized Area in the Amazon: The Case of the Metropolitan Area of Belém-Pará", Revista Brasileira de Meteorologia, 2021

Publication

22

"Urban Heat Island (UHI) Mitigation", Springer Science and Business Media LLC, 2021

Publication

<1 %

Exclude quotes On

Exclude matches < 5 words

Exclude bibliography On